


Applications

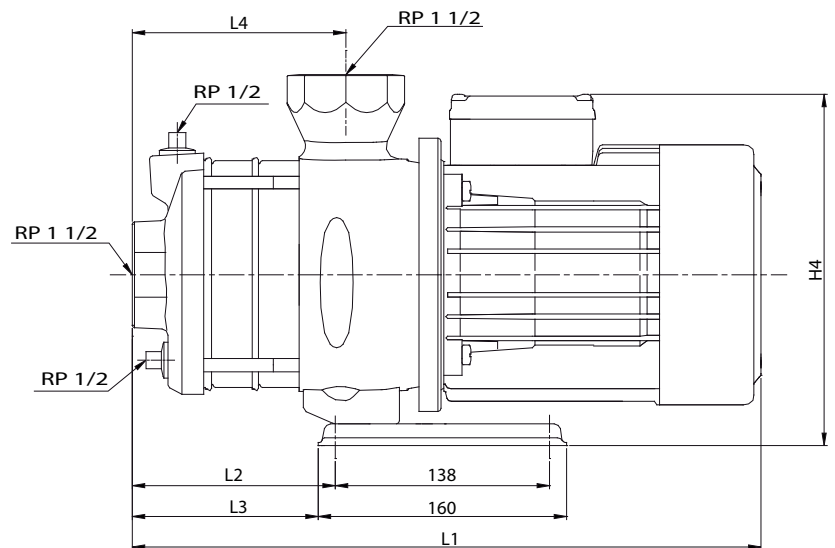
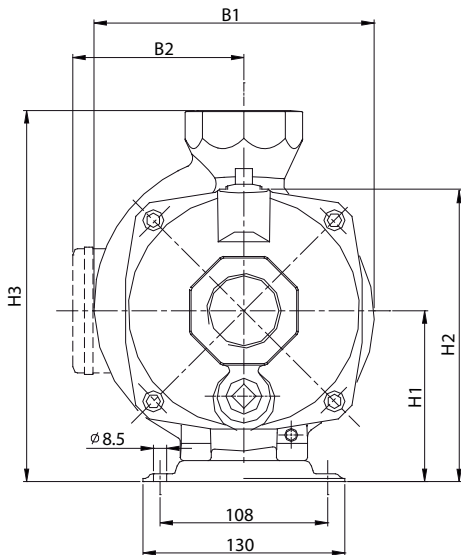
The EH pumps are designed for a wide range of applications including industrial, commercial, domestic and agricultural water pressure boosting, irrigation, transfer duty, circulation systems etc. The pumps are used extensively for specialist applications on packaged equipment.

Construction

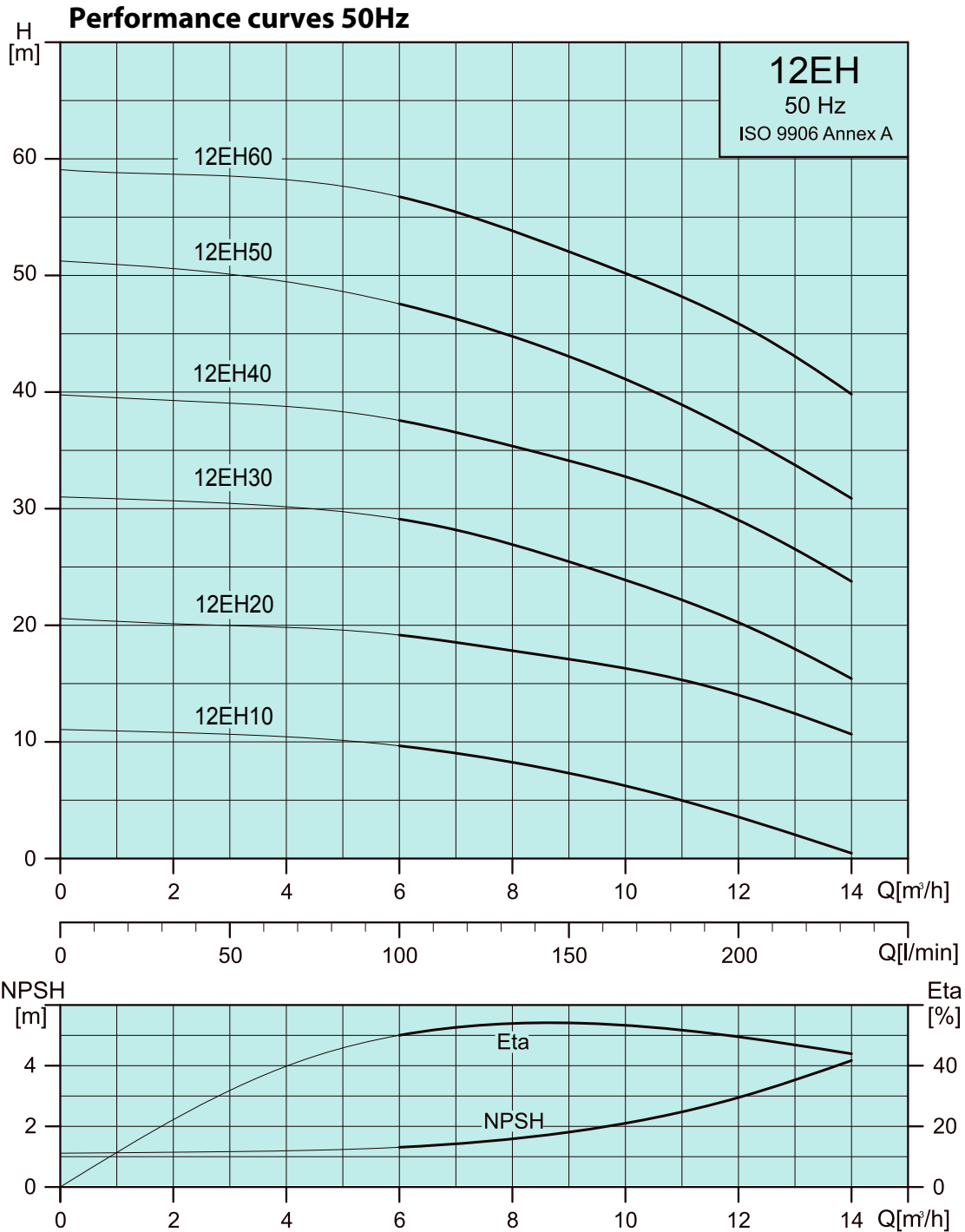
Heavy duty tie-rod supported pump chamber casting with cast iron pump ends for superior strength and reliability. All impellers and diffusers are 304L stainless steel. Filling and drain plugs are fitted as standard. Standard mechanical seal construction: silicon carbide, carbon, EPDM

Operating Conditions

Liquid temperature range: 0°C to +90°C
 Max ambient temperature: 45°C
 Product: Clean water without particles

12EH
Dimensions and weights 50 Hz


PUMP TYPE	mm													Kg		
	L1		L2	L3	L4	B1		B2		H1	H2	H3	H4		1 ~	3 ~
	1 ~	3 ~				1 ~	3 ~	1 ~	3 ~				1 ~	3 ~		
12EH10	-	320	54	42	78	-	181	-	116	112	190	240	-	228	-	17.85
12EH20	360	360	54	42	78	181	181	136	116	112	190	240	248	228	18.35	18.15
12EH30	390	390	84	72	108	181	181	136	116	112	190	240	248	228	20.62	20.4
12EH40	448	448	102	90	108	185	185	156	141	112	190	240	268	253	27.05	26.05
12EH50	478	450	132	120	138	185	185	156	141	112	190	240	268	253	29.22	29.3
12EH60	-	503	132	120	138	-	196	-	147	125	203	253	-	272	-	34.58



Electrical data - 2850 rpm

PUMP TYPE	1 x 220-240 V		3 x 220-240Δ / 380-415Y V	
	W	A	W	A
12EH10	-	-	560	2.4 / 1.4
12EH20	1170	5.4	1140	3.8 / 2.2
12EH30	1710	7.6	1650	5.9 / 3.4
12EH40	2360	10.4	2300	7.1 / 4.1
12EH50	2850	13	2820	9.1 / 5.3
12EH60	-	-	3500	11.1 / 6.4