

Applications

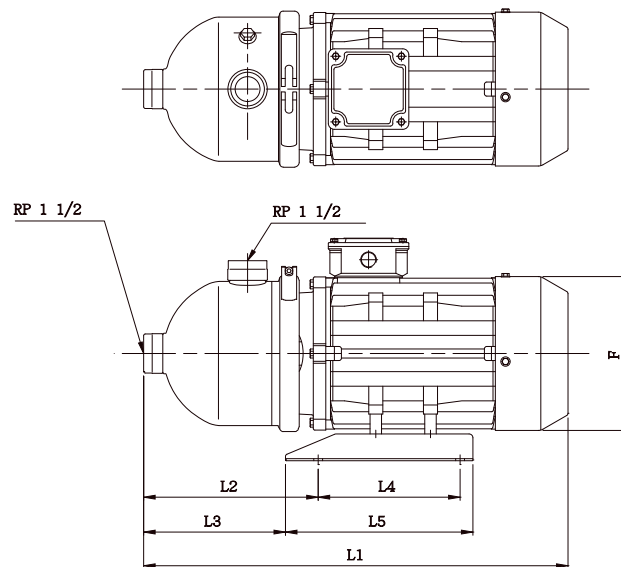
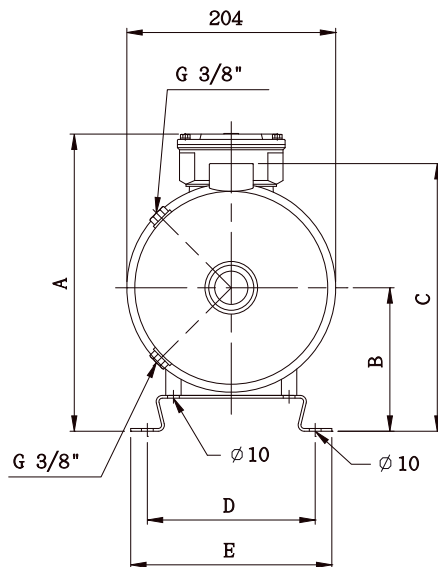
The EHI pumps are designed for a numerous of applications including industrial, commercial and agricultural water pressure boosting, irrigation transfer duty, circulation systems etc. The pumps are suitable for pumping a wide range of non-corrosive non-explosive, non-flammable clean water type liquids.

Construction

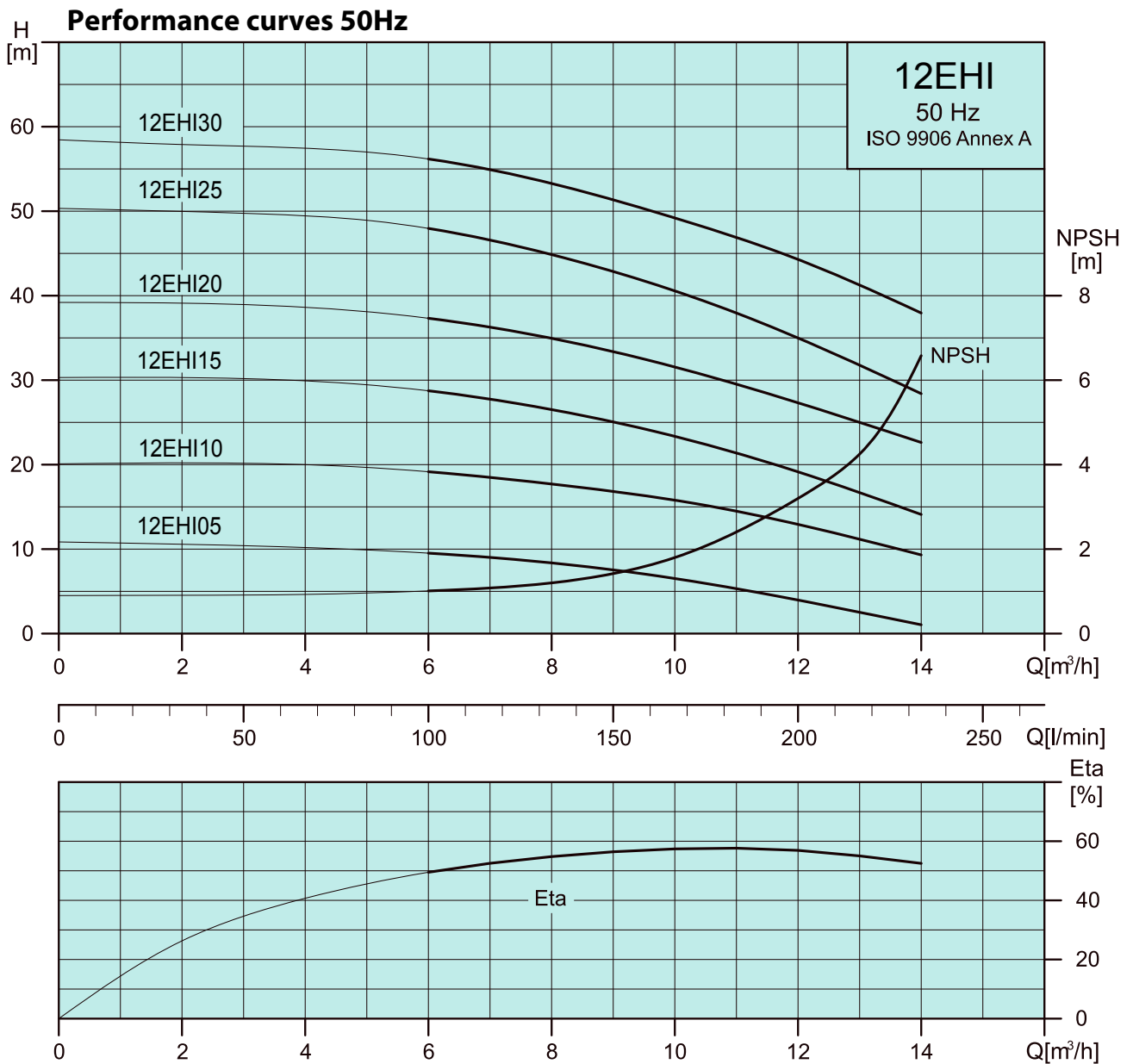
Fully 316 stainless steel wetted parts construction with proven reliable multistage impellers for excellent construction durability. The pump head is close coupled to squirrel cage motor. Standard mechanical seal construction; silicon carbide, silicon carbide, EPDM.

Operating Conditions

Liquid temperature range: °C to +110°C
 Max ambient temperature: 40°C
 Product: Clean water without particles


12EHI
Dimensions and weights 50 Hz


PUMP TYPE	HP	mm														Kg	
		L1		L2	L3	L4	L5	A		B	C	D	E	F	1 ~	3 ~	
		1 ~	3 ~					1 ~	3 ~								
12EHI05	0.5	-	403	181	171	138	162	-	233	118	243	108	132	141	-	9.41	
12EHI10	1.0	441	441	181	171	138	162	255	233	118	243	108	132	141	11.72	11.52	
12EHI15	1.5	441	441	181	171	138	162	255	233	118	243	108	132	141	13.38	13.18	
12EHI20	2.0	514	493	200	180	195	235	267	261	121	245	158	178	177	22.52	21.48	
12EHI25	3.0	514	493	200	180	195	235	267	261	121	245	158	178	177	25.74	24.36	
12EHI30	4.0	-	539	230	198	195	245	-	583	133	259	174	198	197	-	30.20	



Electrical data - 2850 rpm

PUMP TYPE	1 x 220-240V		3 x 220-240Δ / 380-415V V	
	W	A	W	A
12EHI05	-	-	550	2.6 / 1.5
12EHI10	1200	5.5	1210	4.3 / 2.5
12EHI15	1700	7.8	1680	5.9 / 3.4
12EHI20	2460	11	2410	7.4 / 4.3
12EHI25	2900	13	2870	9.2 / 5.3
12EHI30	-	-	3640	11.6 / 6.7