


**Applications**

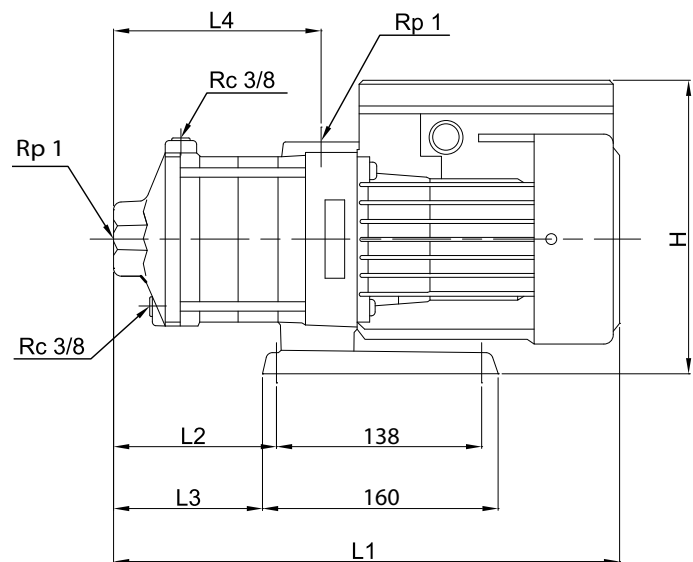
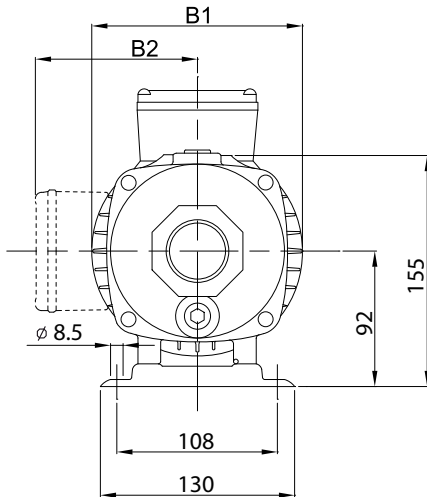
The EH pumps are designed for a wide range of applications including industrial, commercial, domestic and agricultural water pressure boosting, irrigation, transfer duty, circulation systems etc. The pumps are used extensively for specialist applications on packaged equipment.

**Construction**

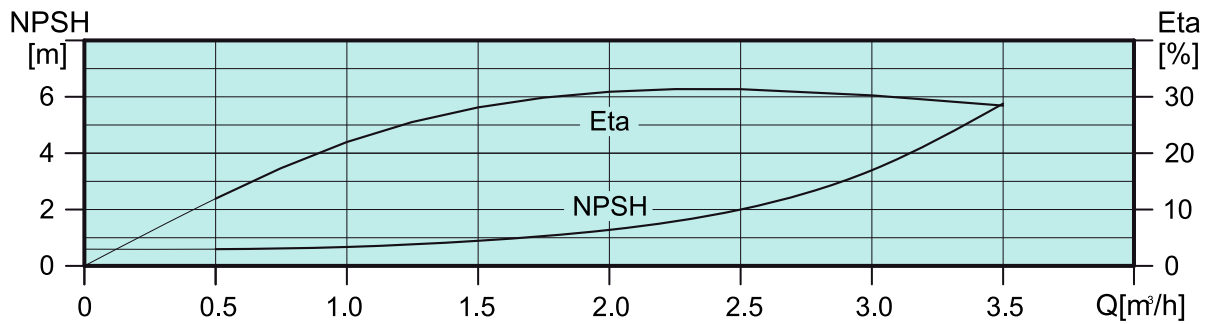
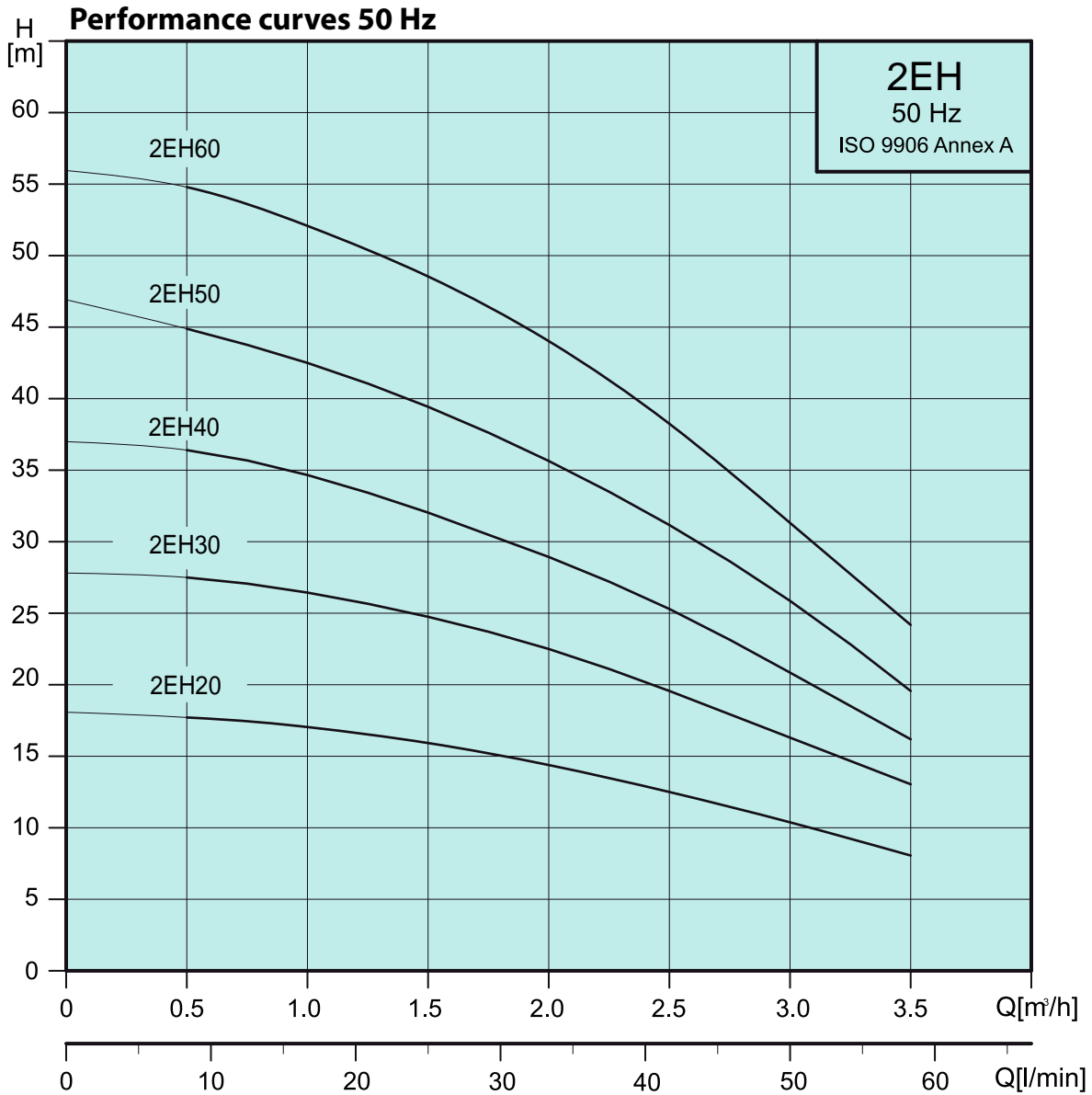
Heavy duty tie-rod supported pump chamber casting with cast iron pump ends for superior strength and reliability. All impellers and diffusers are 304L stainless steel. Filling and drain plugs are fitted as standard. Standard mechanical seal construction: silicon carbide, carbon, EPDM

**Operating Conditions**

Liquid temperature range: 0°C to +90°C  
 Max ambient temperature: 45°C  
 Product: Clean water without particles

**2EH**
**Dimensions and weights 50 Hz**


PUMP TYPE	mm									Kg	
	L1	L2	L3	L4	B1	B2		H		1 ~	3 ~
						1 ~	3 ~	1 ~	3 ~		
2EH20	309	75	63	101	141	127	112	228	206	10.3	10.0
2EH30	327	93	81	119	141	127	112	228	206	10.5	10.3
2EH40	345	111	99	137	141	127	112	228	206	10.8	10.5
2EH50	363	129	117	155	141	127	112	228	206	11.6	11.2
2EH60	381	147	135	173	141	127	112	228	206	11.8	11.5



**Electrical data - 2850 rpm**

PUMP TYPE	1 x 220-240V		3 x 220-240Δ / 380-415Y V	
	W	A	W	A
2EH20	420	2.1	380	1.8 / 1.1
2EH30	480	2.3	460	1.9 / 1.2
2EH40	570	2.6	560	2.0 / 1.2
2EH50	680	3.2	660	2.7 / 1.6
2EH60	810	3.7	810	2.8 / 1.6