


Applications

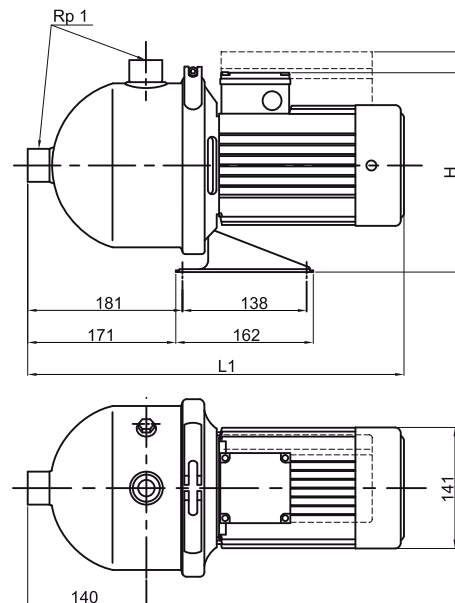
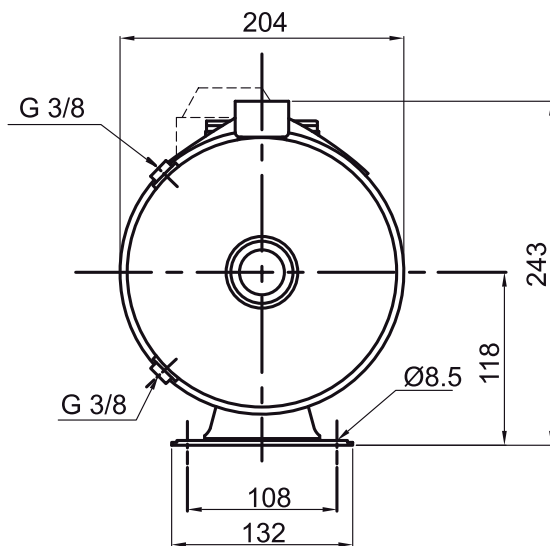
The EHI pumps are designed for a numerous of applications including industrial, commercial and agricultural water pressure boosting, irrigation transfer duty, circulation systems etc. The pumps are suitable for pumping a wide range of non-corrosive non-explosive, non-flammable clean water type liquids.

Construction

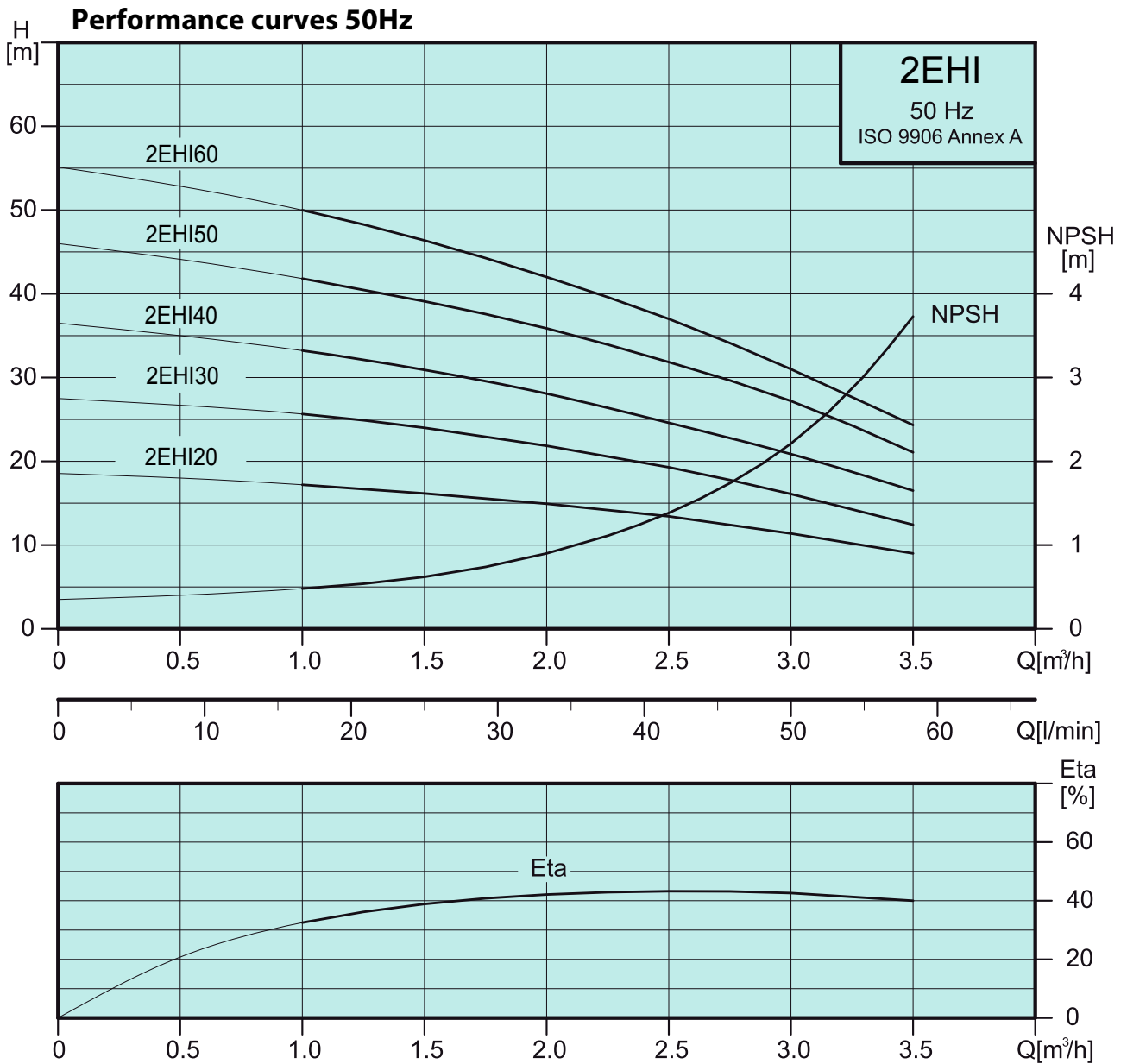
Fully 316 stainless steel wetted parts construction with proven reliable multistage impellers for excellent construction durability. The pump head is close coupled to squirrel cage motor. Standard mechanical seal construction; silicon carbide, carbon, EPDM.

Operating Conditions

Liquid temperature range: °C to +110°C
 Max ambient temperature: 40°C
 Product: Clean water without particles

2EHI
Dimensions and weights 50 Hz


PUMP TYPE	mm				Kg
	1 ~		3 ~		
	L1	H	L1	H	
2EHI20	403	255	403	233	9.6
2EHI30	403	255	403	233	9.9
2EHI40	403	255	403	233	10.1
2EHI50	403	255	403	233	10.8
2EHI60	403	255	403	233	11.0



Electrical data - 2850 rpm

PUMP TYPE	1 x 220-240V		3 x 220-240Δ / 380-415V V	
	W	A	W	A
2EHI20	450	1.9	370	1.9 / 1.1
2EHI30	540	2.4	480	1.9 / 1.1
2EHI40	630	2.8	620	2.0 / 1.2
2EHI50	800	3.8	820	2.7 / 1.6
2EHI60	940	4.2	910	2.8 / 1.6