


**Applications**

The EHI pumps are designed for a numerous of applications including industrial, commercial and agricultural water pressure boosting, irrigation transfer duty, circulation systems etc. The pumps are suitable for pumping a wide range of non-corrosive non-explosive, non-flammable clean water type liquids.

**Construction**

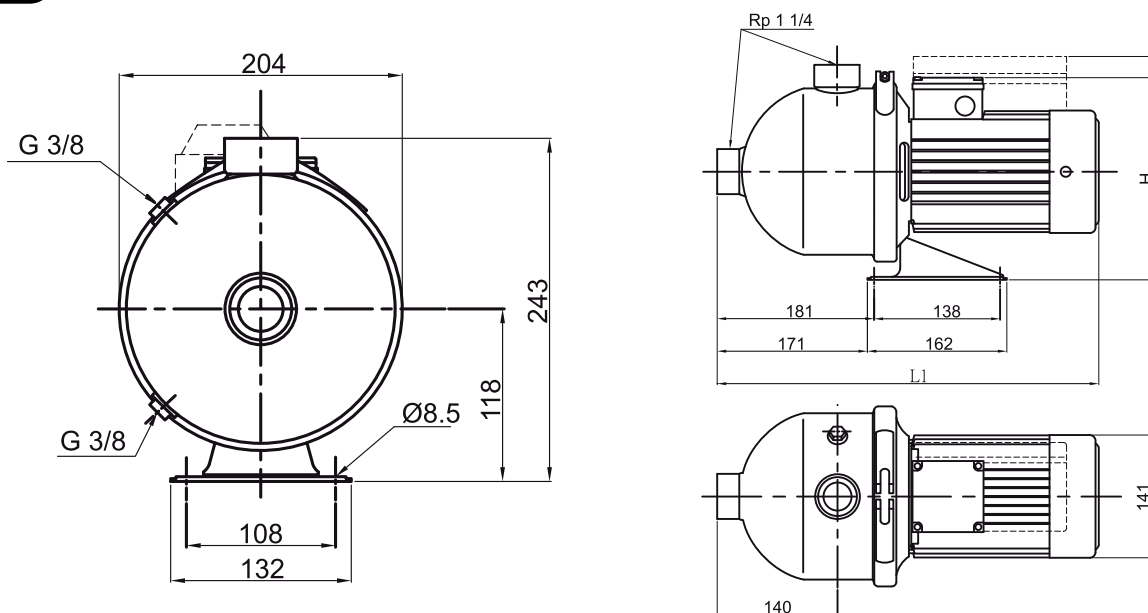
Fully 316 stainless steel wetted parts construction with proven reliable multistage impellers for excellent construction durability. The pump head is close coupled to squirrel cage motor. Standard mechanical seal construction; silicon carbide, carbon, EPDM.

**Operating Conditions**

Liquid temperature range: °C to +110°C

Max ambient temperature: 40°C

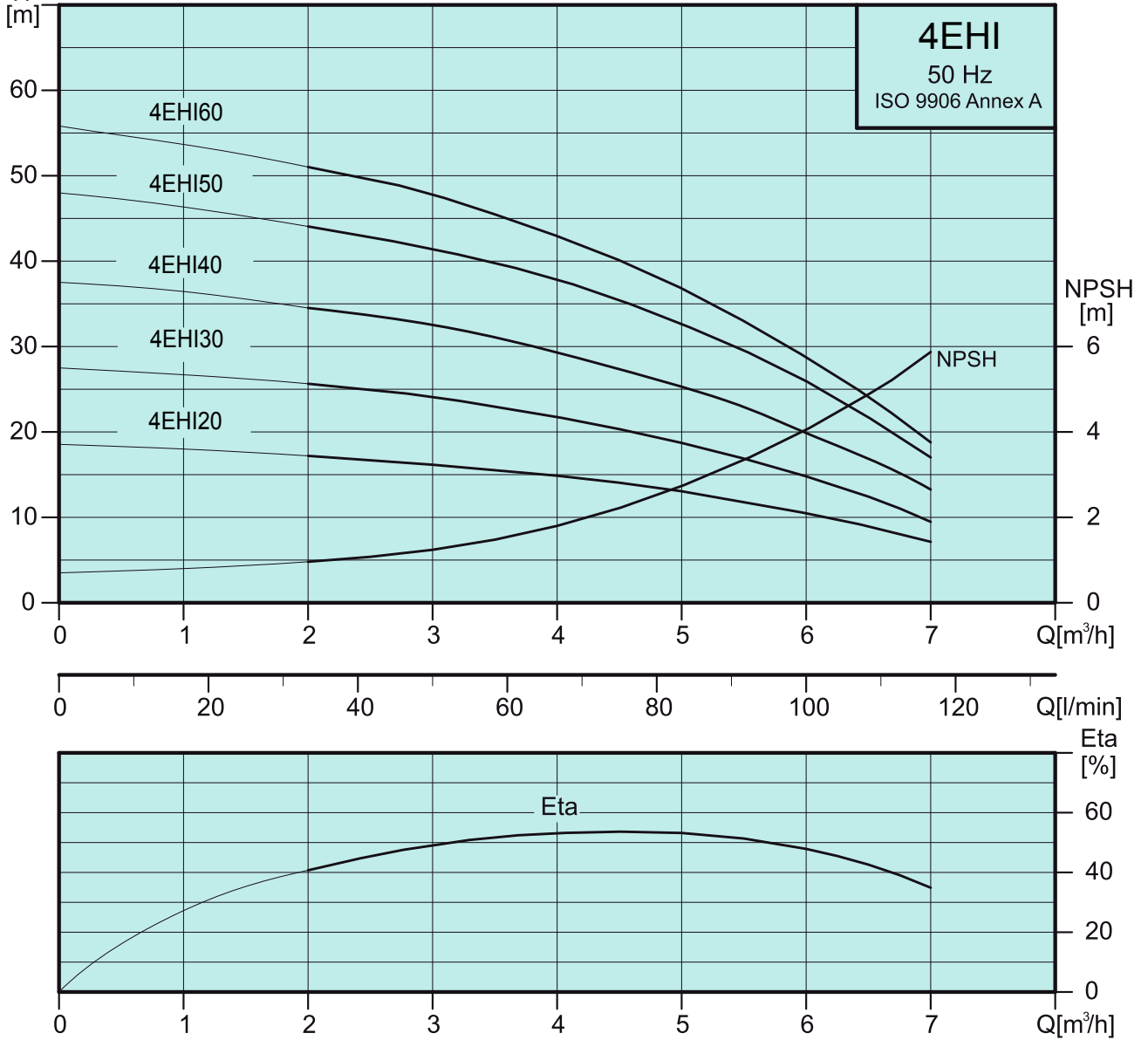
Product: Clean water without particles

**4EHI**
**Dimensions and weights 50 Hz**


PUMP TYPE	mm				Kg
	1 ~		3 ~		
	L1	H	L1	H	
4EHI20	403	255	403	233	9.6
4EHI30	403	255	403	233	9.9
4EHI40	403	255	403	233	10.6
4EHI50	441	255	441	233	12.1
4EHI60	441	255	441	233	12.3



**Performance curves 50Hz**



**Electrical data - 2850 rpm**

PUMP TYPE	1 x 220-240V		3 x 220-240Δ / 380-415Y V	
	W	A	W	A
4EHI20	560	2.5	560	2.0 / 1.2
4EHI30	760	3.5	720	2.4 / 1.4
4EHI40	1000	4.8	980	3.2 / 1.8
4EHI50	1220	5.7	1210	4.0 / 2.3
4EHI60	1410	6.4	1410	4.8 / 2.7