


**Applications**

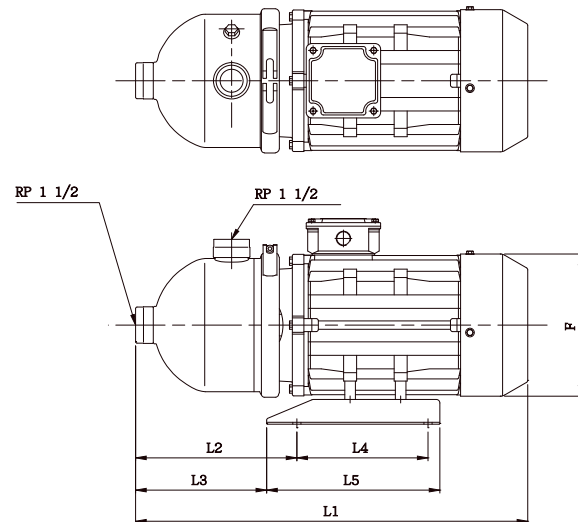
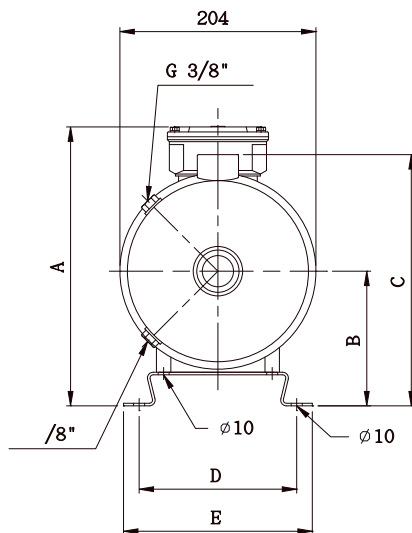
The EHI pumps are designed for a numerous of applications including industrial, commercial and agricultural water pressure boosting, irrigation transfer duty, circulation systems etc. The pumps are suitable for pumping a wide range of non-corrosive non-explosive, non-flammable clean water type liquids.

**Construction**

Fully 316 stainless steel wetted parts construction with proven reliable multistage impellers for excellent construction durability. The pump head is close coupled to squirrel cage motor. Standard mechanical seal construction; silicon carbide, silicon carbide, EPDM.

**Operating Conditions**

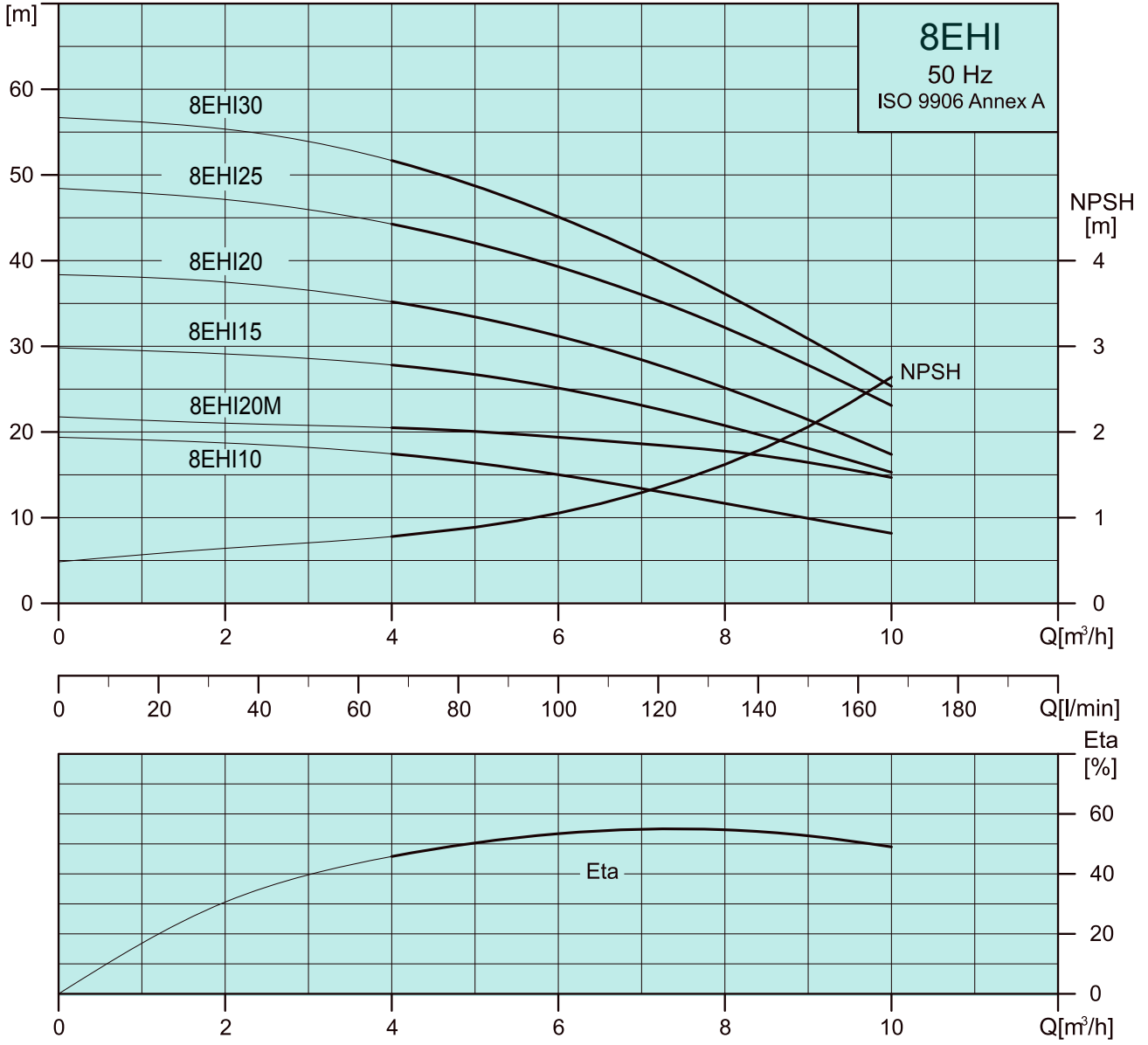
Liquid temperature range: °C to +110°C  
 Max ambient temperature: 40°C  
 Product: Clean water without particles

**8EHI**
**Dimensions and weights 50 Hz**


PUMP TYPE			mm														Kg	
			L1		L2	L3	L4	L5	A		B	C	D	E	F			
			1~	3~					1~	3~								
8EHI10	-	0.75	403	403	181	171	138	162	255	233	118	243	108	132	141	10.20	10.02	
8EHI20M	-	1.0	441	441	181	171	138	162	255	233	118	243	108	132	141	12.28	12.08	
8EHI15	-	1.0	-	441	181	171	138	162	-	233	118	243	108	132	141	-	11.98	
8EHI20	-	1.5	441	441	181	171	138	162	255	233	118	243	108	132	141	13.54	13.34	
8EHI25	1	2.0	514	-	200	180	195	235	267	-	121	245	158	178	177	23.08	-	
	3	1.5	-	441	181	171	138	162	-	233	118	243	108	132	141	-	13.92	
8EHI30	-	2.0	514	493	200	180	195	235	267	261	121	245	158	178	177	23.14	22.22	



**Performance curves 50Hz**



**Electrical data - 2850 rpm**

PUMP TYPE	1 x 220-240V		3 x 220-240Δ / 380-415Y V	
	W	A	W	A
8EHI10	720	3.4	760	2.9 / 1.7
8EHI20M	-	-	1030	4.1 / 2.4
8EHI15	1150	5.4	1180	4.3 / 2.5
8EHI20	1400	6.4	1430	5.5 / 3.2
8EHI25	1930	8.6	1810	6.0 / 3.5
8EHI30	2100	9.3	2050	6.9 / 4.0